

EXHIBIT A

RESIDENTIAL DISTRICT NO. 1

A PARCEL OF LAND BEING A PART OF THE SOUTH HALF OF SECTION 6, TOWNSHIP 1 NORTH, RANGE 68 WEST OF THE SIXTH PRINCIPAL MERIDIAN, TOWN OF ERIE, COUNTY OF WELD, STATE OF COLORADO, BEING MORE PARTICULARLY DESCRIBED AS FOLLOWS:

COMMENCING AT THE EAST QUARTER CORNER OF SAID SECTION 6, BEING MONUMENTED BY A FOUND NO. 6 REBAR WITH A 2.5 INCH DIAMETER ILLEGIBLE ALUMINUM CAP IN A RANGE BOX, FROM WHICH THE SOUTHEAST CORNER OF SAID SECTION 6, BEING MONUMENTED BY A FOUND 2-1/2 INCH DIAMETER IRON PIPE WITH A 3.25" BRASS CAP SET BY THE UNITED STATES BUREAU OF LAND MANAGEMENT IS ASSUMED TO BEAR SOUTH 00°59'17" WEST, A DISTANCE OF 2537.34 FEET, WITH ALL BEARINGS CONTAINED HEREIN BEING RELATIVE THERETO;

THENCE SOUTH 71°02'27" WEST, A DISTANCE OF 969.86 FEET TO THE **POINT OF BEGINNING**;

THENCE THE FOLLOWING 77 (SEVENTY SEVEN) COURSES;

1. SOUTH 09°55'03" EAST, A DISTANCE OF 88.30 FEET;
2. SOUTH 07°18'49" EAST, A DISTANCE OF 49.45 FEET;
3. SOUTH 13°40'24" EAST, A DISTANCE OF 49.45 FEET;
4. SOUTH 11°03'52" EAST, A DISTANCE OF 91.19 FEET;
5. SOUTH 55°07'48" EAST, A DISTANCE OF 143.65 FEET;
6. SOUTH 82°50'32" EAST, A DISTANCE OF 67.25 FEET;
7. SOUTH 74°19'48" EAST, A DISTANCE OF 150.00 FEET;
8. SOUTH 71°12'59" EAST, A DISTANCE OF 67.39 FEET;
9. SOUTH 58°39'04" EAST, A DISTANCE OF 78.05 FEET;
10. SOUTH 44°38'31" EAST, A DISTANCE OF 78.05 FEET;
11. SOUTH 30°37'56" EAST, A DISTANCE OF 78.05 FEET;
12. SOUTH 16°37'23" EAST, A DISTANCE OF 78.04 FEET;
13. SOUTH 02°36'51" EAST, A DISTANCE OF 78.05 FEET;
14. SOUTH 10°40'37" WEST, A DISTANCE OF 71.81 FEET;
15. SOUTH 15°16'33" WEST, A DISTANCE OF 210.00 FEET;
16. SOUTH 74°43'27" EAST, A DISTANCE OF 30.02 FEET TO A POINT OF CURVATURE;
17. ALONG THE ARC OF A CURVE TO THE LEFT HAVING A RADIUS OF 435.00 FEET, A CENTRAL ANGLE OF 14°17'24", AN ARC LENGTH OF 108.49 FEET, THE CHORD OF WHICH BEARS SOUTH 81°52'09" EAST, 108.21 FEET TO A POINT OF TANGENCY;
18. SOUTH 89°00'51" EAST, A DISTANCE OF 98.77 FEET TO A POINT OF CURVATURE;
19. ALONG THE ARC OF A CURVE TO THE LEFT HAVING A RADIUS OF 25.00 FEET, A CENTRAL ANGLE OF 89°59'52", AN ARC LENGTH OF 39.27 FEET, THE CHORD OF WHICH BEARS NORTH 45°59'13" EAST, 35.35 FEET;

20. SOUTH 09°28'20" EAST, A DISTANCE OF 66.10 FEET TO A POINT ON THE WESTERLY RIGHT OF WAY OF WELD COUNTY ROAD 3;
21. SOUTH 00°59'17" WEST, ALONG SAID WESTERLY RIGHT OF WAY A DISTANCE OF 65.00 FEET;
22. SOUTH 00°59'17" WEST, CONTINUING ON SAID RIGHT OF WAY A DISTANCE OF 740.31 FEET;
23. SOUTH 89°42'02" WEST, A DISTANCE OF 359.78 FEET;
24. SOUTH 51°32'36" WEST, A DISTANCE OF 543.55 FEET TO A POINT ON THE SOUTH LINE OF THE SOUTHEAST QUARTER OF SAID SECTION 6;
25. SOUTH 89°42'29" WEST, ALONG THE SOUTH LINE OF THE SOUTHEAST QUARTER OF SAID SECTION 6 A DISTANCE OF 1787.78 FEET TO THE SOUTH QUARTER CORNER THEREOF;
26. SOUTH 89°49'37" WEST, ALONG THE SOUTH LINE OF THE SOUTHWEST QUARTER OF SAID SECTION A DISTANCE OF 604.74 FEET;
27. NORTH 03°29'34" WEST, A DISTANCE OF 424.73 FEET;
28. NORTH 00°59'09" EAST, A DISTANCE OF 325.00 FEET;
29. NORTH 08°48'60" EAST, A DISTANCE OF 82.70 FEET;
30. NORTH 34°52'59" EAST, A DISTANCE OF 82.56 FEET;
31. SOUTH 41°51'27" EAST, A DISTANCE OF 119.48 FEET TO A POINT OF NONTANGENTIAL CURVATURE;
32. ALONG THE ARC OF A CURVE TO THE RIGHT HAVING A RADIUS OF 58.00 FEET, A CENTRAL ANGLE OF 42°50'36", AN ARC LENGTH OF 43.37 FEET, THE CHORD OF WHICH BEARS NORTH 69°33'51" EAST, 42.37 FEET TO A POINT OF NONTANGENCY;
33. NORTH 00°59'09" EAST, A DISTANCE OF 123.96 FEET;
34. SOUTH 89°00'51" EAST, A DISTANCE OF 226.00 FEET TO A POINT OF NONTANGENTIAL CURVATURE;
35. ALONG THE ARC OF A CURVE TO THE RIGHT HAVING A RADIUS OF 485.00 FEET, A CENTRAL ANGLE OF 07°35'27", AN ARC LENGTH OF 64.26 FEET, THE CHORD OF WHICH BEARS NORTH 12°08'45" EAST, 64.21 FEET TO A POINT OF NONTANGENCY;
36. NORTH 74°03'32" WEST, A DISTANCE OF 120.00 FEET;
37. NORTH 19°47'00" EAST, A DISTANCE OF 81.08 FEET;
38. NORTH 27°28'05" EAST, A DISTANCE OF 81.08 FEET;
39. NORTH 35°09'10" EAST, A DISTANCE OF 81.08 FEET;
40. NORTH 42°50'14" EAST, A DISTANCE OF 81.08 FEET;
41. NORTH 50°31'19" EAST, A DISTANCE OF 81.08 FEET;
42. NORTH 48°37'60" EAST, A DISTANCE OF 65.00 FEET;
43. NORTH 33°46'23" EAST, A DISTANCE OF 65.00 FEET;
44. NORTH 28°34'45" EAST, A DISTANCE OF 74.03 FEET;

45. NORTH 36°06'12" EAST, A DISTANCE OF 87.94 FEET;
46. SOUTH 48°24'42" EAST, A DISTANCE OF 120.00 FEET TO A POINT TO A POINT OF NONTANGENTIAL CURVATURE;
47. ALONG THE ARC OF A CURVE TO THE RIGHT HAVING A RADIUS OF 340.00 FEET, A CENTRAL ANGLE OF 08°26'00", AN ARC LENGTH OF 50.05 FEET, THE CHORD OF WHICH BEARS NORTH 45°48'19" EAST, 50.00 FEET TO A POINT OF NONTANGENCY;
48. NORTH 39°58'41" WEST, A DISTANCE OF 120.00 FEET;
49. NORTH 55°30'25" EAST, A DISTANCE OF 87.94 FEET;
50. NORTH 65°44'36" EAST, A DISTANCE OF 79.47 FEET;
51. NORTH 62°56'03" EAST, A DISTANCE OF 65.00 FEET;
52. NORTH 52°59'36" EAST, A DISTANCE OF 65.00 FEET;
53. NORTH 43°03'20" EAST, A DISTANCE OF 65.00 FEET;
54. NORTH 45°01'11" EAST, A DISTANCE OF 93.22 FEET;
55. NORTH 58°06'14" EAST, A DISTANCE OF 92.18 FEET;
56. NORTH 72°06'57" EAST, A DISTANCE OF 106.39 FEET;
57. NORTH 10°09'33" WEST, A DISTANCE OF 9.86 FEET TO A POINT OOF NONTANGENTIAL CURVATURE;
58. ALONG THE ARC OF A CURVE TO THE RIGHT HAVING A RADIUS OF 205.00 FEET, A CENTRAL ANGLE OF 09°32'21", AN ARC LENGTH OF 34.13 FEET, THE CHORD OF WHICH BEARS NORTH 05°23'22" WEST, 34.09 FEET TO A POINT OF NONTANGENCY;
59. NORTH 85°23'31" WEST, A DISTANCE OF 120.32 FEET;
60. NORTH 10°29'21" EAST, A DISTANCE OF 111.12 FEET;
61. NORTH 28°27'27" EAST, A DISTANCE OF 101.51 FEET;
62. NORTH 45°43'35" EAST, A DISTANCE OF 102.92 FEET;
63. NORTH 62°53'21" EAST, A DISTANCE OF 100.27 FEET;
64. NORTH 78°33'14" EAST, A DISTANCE OF 85.28 FEET;
65. NORTH 77°55'30" EAST, A DISTANCE OF 140.68 FEET;
66. SOUTH 76°59'09" EAST, A DISTANCE OF 60.00 FEET;
67. SOUTH 76°52'46" EAST, A DISTANCE OF 166.92 FEET TO A POINT OF NONTANGENTIAL CURVATURE;
68. ALONG THE ARC OF A CURVE TO THE RIGHT HAVING A RADIUS OF 48.00 FEET, A CENTRAL ANGLE OF 71°54'37", AN ARC LENGTH OF 60.24 FEET, THE CHORD OF WHICH BEARS NORTH 80°06'21" EAST, 56.37 FEET TO A POINT OF NONTANGENCY;
69. NORTH 68°12'55" EAST, A DISTANCE OF 107.71 FEET;
70. SOUTH 78°56'36" EAST, A DISTANCE OF 16.30 FEET;

71. SOUTH 30°22'43" EAST, A DISTANCE OF 69.54 FEET;
72. NORTH 60°44'16" EAST, A DISTANCE OF 28.55 FEET;
73. NORTH 82°36'36" EAST, A DISTANCE OF 66.41 FEET;
74. SOUTH 77°14'15" EAST, A DISTANCE OF 74.04 FEET;
75. SOUTH 74°17'56" EAST, A DISTANCE OF 50.29 FEET;
76. SOUTH 61°38'15" EAST, A DISTANCE OF 75.84 FEET;
77. SOUTH 36°10'37" EAST, A DISTANCE OF 76.65 FEET TO THE **POINT OF BEGINNING**.

SAID PARCEL CONTAINING A CALCULATED AREA OF 5,608,342 SQUARE FEET OR 128.750 ACRES, MORE OR LESS AND BEING SUBJECT TO ANY EXISTING EASEMENTS AND OR RIGHTS OF WAY OF WHATSOEVER NATURE.

THE LINEAL UNIT USED IN THE PREPARATION OF THIS LEGAL DESCRIPTION IS THE U.S. SURVEY FOOT AS DEFINED BY THE UNITED STATES DEPARTMENT OF COMMERCE, NATIONAL INSTITUTE OF STANDARDS AND TECHNOLOGY.

I, PATRICK M. STEENBURG, A SURVEYOR LICENSED IN THE STATE OF COLORADO, DO HEREBY CERTIFY THAT THE ABOVE LEGAL DESCRIPTION AND ATTACHED EXHIBIT WERE PREPARED BY ME OR UNDER MY DIRECT SUPERVISION AND CHECKING.

PATRICK M. STEENBURG P.L.S. 38004
FOR AND ON BEHALF OF
WESTWOOD PROFESSIONAL SERVICES, INC.
10333 E. DRY CREEK ROAD, SUITE 240
ENGLEWOOD, CO 80112



EXHIBIT A

RESIDENTIAL DISTRICT NO. 2

A PARCEL OF LAND BEING A PART OF THE EAST HALF OF SECTION 6, TOWNSHIP 1 NORTH, RANGE 68 WEST OF THE SIXTH PRINCIPAL MERIDIAN, TOWN OF ERIE, COUNTY OF WELD, STATE OF COLORADO, BEING MORE PARTICULARLY DESCRIBED AS FOLLOWS:

COMMENCING AT THE NORTH QUARTER CORNER OF SAID SECTION 6, BEING MONUMENTED BY A FOUND NO. 6 REBAR WITH A 3.25 INCH DIAMETER ALUMINUM CAP IN A RANGE BOX SET BY PLS 36053, FROM WHICH THE NORTHEAST CORNER OF SAID SECTION 6, BEING MONUMENTED BY A FOUND NUMBER 6 REBAR WITH A 2-1/2 INCH DIAMETER ALUMINUM CAP SET BY PLS 25937 IS ASSUMED TO BEAR NORTH 88°46'59" EAST, A DISTANCE OF 2642.32 FEET, WITH ALL BEARINGS CONTAINED HEREIN BEING RELATIVE THERETO;

THENCE SOUTH 62°41'48" EAST, A DISTANCE OF 209.44 FEET TO A POINT ON THE SOUTH RIGHT OF WAY OF COLORADO STATE HIGHWAY 52, SAID POINT BEING THE **POINT OF BEGINNING**;

THENCE THE FOLLOWING 48 (FORTY EIGHT) COURSES;

1. NORTH 88°46'59" EAST, ALONG SAID SOUTH RIGHT OF WAY A DISTANCE OF 130.00 FEET, TO A POINT ON NONTANGENTIAL CURVATURE;
2. ALONG THE ARC OF A CURVE TO THE LEFT HAVING A RADIUS OF 25.00 FEET, A CENTRAL ANGLE OF 89°59'58", AN ARC LENGTH OF 39.27 FEET, THE CHORD OF WHICH BEARS SOUTH 43°46'58" WEST, 35.36 FEET TO A POINT OF TANGENCY;
3. SOUTH 01°13'01" EAST, A DISTANCE OF 176.53 FEET, TO A POINT OF CURVATURE;
4. ALONG THE ARC OF A CURVE TO THE RIGHT HAVING A RADIUS OF 265.00 FEET, A CENTRAL ANGLE OF 24°18'50", AN ARC LENGTH OF 112.45 FEET, THE CHORD OF WHICH BEARS SOUTH 10°56'23" WEST, 111.61 FEET TO A POINT OF TANGENCY;
5. SOUTH 23°05'48" WEST, A DISTANCE OF 68.50 FEET;
6. SOUTH 34°24'24" WEST, A DISTANCE OF 50.99 FEET;
7. SOUTH 23°05'48" WEST, A DISTANCE OF 215.00 FEET, TO A POINT OF CURVATURE;
8. ALONG THE ARC OF A CURVE TO THE LEFT HAVING A RADIUS OF 220.00 FEET, A CENTRAL ANGLE OF 61°06'05", AN ARC LENGTH OF 234.61 FEET, THE CHORD OF WHICH BEARS SOUTH 07°27'14" EAST, 223.65 FEET TO A POINT OF NONTANGENCY;
9. NORTH 51°59'43" EAST, A DISTANCE OF 18.06 FEET;
10. NORTH 89°32'30" EAST, A DISTANCE OF 610.45 FEET;
11. SOUTH 01°00'57" WEST, A DISTANCE OF 1019.29 FEET;
12. SOUTH 59°07'58" WEST, A DISTANCE OF 146.68 FEET;
13. SOUTH 30°52'02" EAST, A DISTANCE OF 162.45 FEET TO A POINT OF CURVATURE;
14. ALONG THE ARC OF A CURVE TO THE LEFT HAVING A RADIUS OF 145.00 FEET, A CENTRAL ANGLE OF 57°21'43", AN ARC LENGTH OF 145.17 FEET, THE CHORD OF WHICH BEARS SOUTH 59°32'54" EAST, 139.18 FEET TO A POINT OF TANGENCY;
15. SOUTH 88°13'45" EAST, A DISTANCE OF 156.29 FEET TO A POINT OF CURVATURE;

16. ALONG THE ARC OF A CURVE TO THE RIGHT HAVING A RADIUS OF 205.00 FEET, A CENTRAL ANGLE OF 26°31'31", AN ARC LENGTH OF 94.91 FEET, THE CHORD OF WHICH BEARS SOUTH 74°57'59" EAST, 94.06 FEET TO A POINT OF TANGENCY;
17. SOUTH 61°42'14" EAST, A DISTANCE OF 56.15 FEET TO A POINT OF CURVATURE;
18. ALONG THE ARC OF A CURVE TO THE RIGHT HAVING A RADIUS OF 205.00 FEET, A CENTRAL ANGLE OF 26°03'31", AN ARC LENGTH OF 93.24 FEET, THE CHORD OF WHICH BEARS SOUTH 48°40'28" EAST, 92.43 FEET , TO A POINT OOF REVERSE CURVATURE;
19. ALONG THE ARC OF A CURVE TO THE LEFT HAVING A RADIUS OF 15.00 FEET, A CENTRAL ANGLE OF 81°44'14", AN ARC LENGTH OF 21.40 FEET, THE CHORD OF WHICH BEARS SOUTH 76°30'50" EAST, 19.63 FEET TO A POINT OF NONTANGENCY;
20. SOUTH 35°44'52" EAST, A DISTANCE OF 60.74 FEET TO A POINT OF NONTANGENTIAL CURVATURE;
21. ALONG THE ARC OF A CURVE TO THE LEFT HAVING A RADIUS OF 420.00 FEET, A CENTRAL ANGLE OF 50°48'32", AN ARC LENGTH OF 372.45 FEET, THE CHORD OF WHICH BEARS SOUTH 38°25'07" WEST, 360.36 FEET TO A POINT OF TANGENCY;
22. SOUTH 13°00'51" WEST, A DISTANCE OF 285.10 FEET;
23. NORTH 76°59'09" WEST, A DISTANCE OF 60.00 FEET;
24. SOUTH 77°55'30" WEST, A DISTANCE OF 140.68 FEET;
25. SOUTH 78°33'14" WEST, A DISTANCE OF 85.28 FEET;
26. SOUTH 62°53'21" WEST, A DISTANCE OF 100.27 FEET;
27. SOUTH 45°43'35" WEST, A DISTANCE OF 102.92 FEET;
28. SOUTH 28°27'27" WEST, A DISTANCE OF 101.51 FEET;
29. NORTH 41°08'55" WEST, A DISTANCE OF 378.84 FEET;
30. NORTH 19°55'27" WEST, A DISTANCE OF 114.15 FEET , TO A POINT OF NONTANGENTIAL CURVATURE;
31. ALONG THE ARC OF A CURVE TO THE RIGHT HAVING A RADIUS OF 55.00 FEET, A CENTRAL ANGLE OF 79°17'03", AN ARC LENGTH OF 76.11 FEET, THE CHORD OF WHICH BEARS NORTH 66°00'34" WEST, 70.18 FEET TO A POINT OF TANGENCY;
32. NORTH 26°22'02" WEST, A DISTANCE OF 18.59 FEET;
33. NORTH 23°49'34" WEST, A DISTANCE OF 169.16 FEET;
34. NORTH 00°56'10" EAST, A DISTANCE OF 636.11 FEET;
35. NORTH 00°52'52" EAST, A DISTANCE OF 656.22 FEET;
36. SOUTH 89°07'08" EAST, A DISTANCE OF 120.00 FEET;
37. NORTH 00°52'52" EAST, A DISTANCE OF 53.46 FEET TO A POINT OF CURVATURE;
38. ALONG THE ARC OF A CURVE TO THE RIGHT HAVING A RADIUS OF 205.00 FEET, A CENTRAL ANGLE OF 29°23'11", AN ARC LENGTH OF 105.14 FEET, THE CHORD OF WHICH BEARS NORTH 15°34'27" EAST, 103.99 FEET TO A POINT OF TANGENCY;
39. NORTH 30°16'02" EAST, A DISTANCE OF 68.30 FEET TO A POINT OF CURVATURE;

40. ALONG THE ARC OF A CURVE TO THE LEFT HAVING A RADIUS OF 15.00 FEET, A CENTRAL ANGLE OF 90°00'00", AN ARC LENGTH OF 23.56 FEET, THE CHORD OF WHICH BEARS NORTH 14°43'58" WEST, 21.21 FEET TO A POINT ON TANGENCY;
41. NORTH 59°43'58" WEST, A DISTANCE OF 72.44 FEET TO A POINT OF CURVATURE;
42. ALONG THE ARC OF A CURVE TO THE RIGHT HAVING A RADIUS OF 280.00 FEET, A CENTRAL ANGLE OF 82°49'46", AN ARC LENGTH OF 404.78 FEET, THE CHORD OF WHICH BEARS NORTH 18°19'04" WEST, 370.44 FEET TO A POINT OF TANGENCY;
43. NORTH 23°05'48" EAST, A DISTANCE OF 215.00 FEET;
44. NORTH 11°47'12" EAST, A DISTANCE OF 50.99 FEET;
45. NORTH 23°05'48" EAST, A DISTANCE OF 68.50 FEET TO A POINT OF CURVATURE;
46. ALONG THE ARC OF A CURVE TO THE LEFT HAVING A RADIUS OF 185.00 FEET, A CENTRAL ANGLE OF 24°18'50", AN ARC LENGTH OF 78.51 FEET, THE CHORD OF WHICH BEARS NORTH 10°56'23" EAST, 77.92 FEET TO A POINT OF TANGENCY;
47. NORTH 01°13'01" WEST, A DISTANCE OF 176.53 FEET TO A POINT OF CURVATURE;
48. ALONG THE ARC OF A CURVE TO THE LEFT HAVING A RADIUS OF 25.00 FEET, A CENTRAL ANGLE OF 90°00'00", AN ARC LENGTH OF 39.27 FEET, THE CHORD OF WHICH BEARS NORTH 46°13'01" WEST, 35.36 FEET, TO THE **POINT OF BEGINNING**.

SAID PARCEL CONTAINING A CALCULATED AREA OF 1,678,467 SQUARE FEET OR 38.532 ACRES, MORE OR LESS AND BEING SUBJECT TO ANY EXISTING EASEMENTS AND OR RIGHTS OF WAY OF WHATSOEVER NATURE.

THE LINEAL UNIT USED IN THE PREPARATION OF THIS LEGAL DESCRIPTION IS THE U.S. SURVEY FOOT AS DEFINED BY THE UNITED STATES DEPARTMENT OF COMMERCE, NATIONAL INSTITUTE OF STANDARDS AND TECHNOLOGY.

I, PATRICK M. STEENBURG, A SURVEYOR LICENSED IN THE STATE OF COLORADO, DO HEREBY CERTIFY THAT THE ABOVE LEGAL DESCRIPTION AND ATTACHED EXHIBIT WERE PREPARED BY ME OR UNDER MY DIRECT SUPERVISION AND CHECKING.

 PATRICK M. STEENBURG P.L.S. 38004
 FOR AND ON BEHALF OF
 WESTWOOD PROFESSIONAL SERVICES, INC.
 10333 E. DRY CREEK ROAD, SUITE 240
 ENGLEWOOD, CO 80112



EXHIBIT A

RESIDENTIAL DISTRICT NO. 3

A PARCEL OF LAND BEING A PART OF THE EAST HALF OF SECTION 6, TOWNSHIP 1 NORTH, RANGE 68 WEST OF THE SIXTH PRINCIPAL MERIDIAN, TOWN OF ERIE, COUNTY OF WELD, STATE OF COLORADO, BEING MORE PARTICULARLY DESCRIBED AS FOLLOWS:

COMMENCING AT THE NORTHEAST CORNER OF SAID SECTION 6, BEING MONUMENTED BY A FOUND NO. 6 REBAR WITH A 2.5 INCH DIAMETER ALUMINUM CAP IN A RANGE BOX SET BY PLS 25937, FROM WHICH THE EAST QUARTER CORNER OF SAID SECTION 6, BEING MONUMENTED BY A FOUND NO. 6 REBAR WITH A 2-1/2 INCH DIAMETER ILLEGIBLE ALUMINUM CAP IS ASSUMED TO BEAR SOUTH 01°03'09" WEST, A DISTANCE OF 2846.97 FEET, WITH ALL BEARINGS CONTAINED HEREIN BEING RELATIVE THERETO;

THENCE SOUTH 05°17'00" WEST, A DISTANCE OF 975.90 FEET TO THE **POINT OF BEGINNING**;

THENCE THE FOLLOWING FORTY SIX (46) COURSES;

1. SOUTH 09°24'27" EAST, A DISTANCE OF 66.10 FEET TO A POINT ON THE WESTERLY RIGHT OF WAY OF WELD COUNTY ROAD 3;
2. SOUTH 01°03'09" WEST, ALONG SAID WEST RIGHT OF WAY A DISTANCE OF 65.00 FEET TO A POINT OF NONTANGENTIAL CURVATURE;
3. ALONG THE ARC OF A CURVE TO THE LEFT HAVING A RADIUS OF 25.00 FEET, A CENTRAL ANGLE OF 90°00'00", AN ARC LENGTH OF 39.27 FEET, THE CHORD OF WHICH BEARS NORTH 43°56'51" WEST, 35.36 FEET TO A POINT OF TANGENCY;
4. NORTH 88°56'51" WEST, A DISTANCE OF 255.83 FEET TO A POINT OF CURVATURE;
5. ALONG THE ARC OF A CURVE TO THE LEFT HAVING A RADIUS OF 30.00 FEET, A CENTRAL ANGLE OF 51°43'21", AN ARC LENGTH OF 27.08 FEET, THE CHORD OF WHICH BEARS SOUTH 65°11'28" WEST, 26.17 FEET , TO A POINT OF REVERSE CURVATURE;
6. ALONG THE ARC OF A CURVE TO THE RIGHT HAVING A RADIUS OF 83.00 FEET, A CENTRAL ANGLE OF 19°39'05", AN ARC LENGTH OF 28.47 FEET, THE CHORD OF WHICH BEARS SOUTH 49°09'20" WEST, 28.33 FEET TO A POINT OF REVERSE CURVATURE;
7. ALONG THE ARC OF A CURVE TO THE LEFT HAVING A RADIUS OF 30.00 FEET, A CENTRAL ANGLE OF 57°55'43", AN ARC LENGTH OF 30.33 FEET, THE CHORD OF WHICH BEARS SOUTH 30°01'00" WEST, 29.06 FEET TO A POINT OF TANGENCY;
8. SOUTH 01°03'09" WEST, A DISTANCE OF 131.78 FEET TO A POINT OF CURVATURE;
9. ALONG THE ARC OF A CURVE TO THE RIGHT HAVING A RADIUS OF 380.00 FEET, A CENTRAL ANGLE OF 47°31'55", AN ARC LENGTH OF 315.24 FEET, THE CHORD OF WHICH BEARS SOUTH 24°49'06" WEST, 306.28 FEET TO A POINT OF TANGENCY;
10. SOUTH 48°35'04" WEST, A DISTANCE OF 101.54 FEET TO A POINT OF CURVATURE;
11. ALONG THE ARC OF A CURVE TO THE LEFT HAVING A RADIUS OF 320.00 FEET, A CENTRAL ANGLE OF 39°55'27", AN ARC LENGTH OF 222.98 FEET, THE CHORD OF WHICH BEARS SOUTH 28°37'20" WEST, 218.50 FEET TO A POINT OF TANGENCY;
12. SOUTH 08°39'37" WEST, A DISTANCE OF 181.75 FEET TO A POINT OF CURVATURE;
13. ALONG THE ARC OF A CURVE TO THE RIGHT HAVING A RADIUS OF 430.00 FEET, A CENTRAL ANGLE OF 60°25'34", AN ARC LENGTH OF 453.49 FEET, THE CHORD OF WHICH BEARS SOUTH 38°52'24" WEST, 432.77 FEET TO A POINT OF TANGENCY;

14. SOUTH 69°05'11" WEST, A DISTANCE OF 22.68 FEET;
15. SOUTH 20°54'49" EAST, A DISTANCE OF 212.00 FEET;
16. SOUTH 02°35'08" WEST, A DISTANCE OF 28.18 FEET;
17. SOUTH 68°01'21" EAST, A DISTANCE OF 182.00 FEET;
18. SOUTH 21°58'39" WEST, A DISTANCE OF 346.01 FEET;
19. NORTH 74°27'56" WEST, A DISTANCE OF 189.48 FEET;
20. NORTH 74°27'56" WEST, A DISTANCE OF 30.00 FEET;
21. NORTH 74°27'56" WEST, A DISTANCE OF 182.00 FEET;
22. NORTH 45°29'11" WEST, A DISTANCE OF 114.42 FEET;
23. NORTH 32°35'14" WEST, A DISTANCE OF 214.45 FEET TO A POINT OF NONTANGENTIAL CURVATURE;
24. ALONG THE ARC OF A CURVE TO THE RIGHT HAVING A RADIUS OF 420.00 FEET, A CENTRAL ANGLE OF 26°25'47", AN ARC LENGTH OF 193.74 FEET, THE CHORD OF WHICH BEARS NORTH 50°36'30" EAST, 192.03 FEET TO A POINT OF NONTANGENCY;
25. NORTH 35°44'52" WEST, A DISTANCE OF 60.74 FEET TO A POINT OF NONTANGENTIAL CURVATURE;
26. ALONG THE ARC OF A CURVE TO THE RIGHT HAVING A RADIUS OF 480.00 FEET, A CENTRAL ANGLE OF 06°28'08", AN ARC LENGTH OF 54.19 FEET, THE CHORD OF WHICH BEARS NORTH 65°51'07" EAST, 54.16 FEET TO A POINT OF TANGENCY;
27. NORTH 69°05'11" EAST, A DISTANCE OF 329.34 FEET TO A POINT OF CURVATURE;
28. ALONG THE ARC OF A CURVE TO THE LEFT HAVING A RADIUS OF 370.00 FEET, A CENTRAL ANGLE OF 60°25'34", AN ARC LENGTH OF 390.22 FEET, THE CHORD OF WHICH BEARS NORTH 38°52'24" EAST, 372.38 FEET TO A POINT OF TANGENCY;
29. NORTH 08°39'37" EAST, A DISTANCE OF 181.75 FEET TO A POINT OF CURVATURE;
30. ALONG THE ARC OF A CURVE TO THE RIGHT HAVING A RADIUS OF 380.00 FEET, A CENTRAL ANGLE OF 21°47'52", AN ARC LENGTH OF 144.57 FEET, THE CHORD OF WHICH BEARS NORTH 19°33'33" EAST, 143.70 FEET , TO A POINT OF REVERSE CURVATURE;
31. ALONG THE ARC OF A CURVE TO THE LEFT HAVING A RADIUS OF 15.00 FEET, A CENTRAL ANGLE OF 83°27'30", AN ARC LENGTH OF 21.85 FEET, THE CHORD OF WHICH BEARS NORTH 11°16'16" WEST, 19.97 FEET TO A POINT OF TANGENCY;
32. NORTH 53°00'02" WEST, A DISTANCE OF 64.33 FEET TO A POINT OF A CURVATURE;
33. ALONG THE ARC OF A CURVE TO THE LEFT HAVING A RADIUS OF 220.00 FEET, A CENTRAL ANGLE OF 10°33'31", AN ARC LENGTH OF 40.54 FEET, THE CHORD OF WHICH BEARS NORTH 58°16'47" WEST, 40.49 FEET TO A POINT OF TANGENCY;
34. NORTH 63°33'33" WEST, A DISTANCE OF 69.05 FEET TO A POINT OF CURVATURE;
35. ALONG THE ARC OF A CURVE TO THE RIGHT HAVING A RADIUS OF 93.00 FEET, A CENTRAL ANGLE OF 81°57'53", AN ARC LENGTH OF 133.04 FEET, THE CHORD OF WHICH BEARS NORTH 22°34'37" WEST, 121.98 FEET TO A POINT OF NONTANGENCY;
36. NORTH 63°33'33" WEST, A DISTANCE OF 85.91 FEET;

37. NORTH 26°26'27" EAST, A DISTANCE OF 370.00 FEET;
38. SOUTH 63°33'33" EAST, A DISTANCE OF 85.00 FEET;
39. NORTH 26°26'27" EAST, A DISTANCE OF 54.03 FEET TO A POINT OF CURVATURE;
40. ALONG THE ARC OF A CURVE TO THE RIGHT HAVING A RADIUS OF 93.00 FEET, A CENTRAL ANGLE OF 64°36'42", AN ARC LENGTH OF 104.87 FEET, THE CHORD OF WHICH BEARS NORTH 58°44'48" EAST, 99.41 FEET TO A POINT OF TANGENCY;
41. SOUTH 88°56'51" EAST, A DISTANCE OF 125.00 FEET TO A POINT OF CURVATURE;
42. ALONG THE ARC OF A CURVE TO THE LEFT HAVING A RADIUS OF 30.00 FEET, A CENTRAL ANGLE OF 57°55'43", AN ARC LENGTH OF 30.33 FEET, THE CHORD OF WHICH BEARS NORTH 62°05'17" EAST, 29.06 FEET , TO A POINT OF REVERSE CURVATURE;
43. ALONG THE ARC OF A CURVE TO THE RIGHT HAVING A RADIUS OF 83.00 FEET, A CENTRAL ANGLE OF 109°39'05", AN ARC LENGTH OF 158.84 FEET, THE CHORD OF WHICH BEARS NORTH 87°56'58" EAST, 135.69 FEET TO A POINT OF REVERSE CURVATURE;
44. ALONG THE ARC OF A CURVE TO THE LEFT HAVING A RADIUS OF 30.00 FEET, A CENTRAL ANGLE OF 51°43'21", AN ARC LENGTH OF 27.08 FEET, THE CHORD OF WHICH BEARS SOUTH 63°05'10" EAST, 26.17 FEET TO A POINT OF TANGENCY;
45. SOUTH 88°56'51" EAST, A DISTANCE OF 243.83 FEET TO A POINT OF A CURVATURE;
46. ALONG THE ARC OF A CURVE TO THE LEFT HAVING A RADIUS OF 25.00 FEET, A CENTRAL ANGLE OF 90°00'00", AN ARC LENGTH OF 39.27 FEET, THE CHORD OF WHICH BEARS NORTH 46°03'09" EAST, 35.36 FEET TO THE **POINT OF BEGINNING**.

SAID PARCEL CONTAINING A CALCULATED AREA OF 633,143 SQUARE FEET OR 14.535 ACRES, MORE OR LESS AND BEING SUBJECT TO ANY EXISTING EASEMENTS AND OR RIGHTS OF WAY OF WHATSOEVER NATURE.

THE LINEAL UNIT USED IN THE PREPARATION OF THIS LEGAL DESCRIPTION IS THE U.S. SURVEY FOOT AS DEFINED BY THE UNITED STATES DEPARTMENT OF COMMERCE, NATIONAL INSTITUTE OF STANDARDS AND TECHNOLOGY.

I, PATRICK M. STEENBURG, A SURVEYOR LICENSED IN THE STATE OF COLORADO, DO HEREBY CERTIFY THAT THE ABOVE LEGAL DESCRIPTION AND ATTACHED EXHIBIT WERE PREPARED BY ME OR UNDER MY DIRECT SUPERVISION AND CHECKING.

PATRICK M. STEENBURG P.L.S. 38004
 FOR AND ON BEHALF OF
 WESTWOOD PROFESSIONAL SERVICES, INC.
 10333 E. DRY CREEK ROAD, SUITE 240
 ENGLEWOOD, CO 80112



EXHIBIT A

RESIDENTIAL DISTRICT NO. 4

A PARCEL OF LAND BEING A PART OF SECTION 6, TOWNSHIP 1 NORTH, RANGE 68 WEST OF THE SIXTH PRINCIPAL MERIDIAN, TOWN OF ERIE, COUNTY OF WELD, STATE OF COLORADO, BEING MORE PARTICULARLY DESCRIBED AS FOLLOWS:

COMMENCING AT THE NORTHEAST CORNER OF SAID SECTION 6, AND CONSIDERING THE NORTH LINE OF THE NORTHEAST QUARTER OF SAID SECTION, BEING MONUMENTED AS SHOWN ON THE ATTACHED EXHIBIT, TO BEAR SOUTH 88°46'59" WEST, 2642.32 FEET WITH ALL BEARINGS CONTAINED HEREIN BEING RELATIVE THERETO;

THENCE SOUTH 53°47'00" WEST, A DISTANCE OF 866.11 FEET TO THE **POINT OF BEGINNING**;

THENCE THE FOLLOWING FIFTY SEVEN (57) COURSES;

1. SOUTH 66°02'35" EAST, A DISTANCE OF 188.09 FEET;
2. SOUTH 50°07'33" EAST, A DISTANCE OF 98.34 FEET;
3. SOUTH 02°31'13" WEST, A DISTANCE OF 297.86 FEET, TO A POINT OF NONTANGENTIAL CURVATURE;
4. ALONG THE ARC OF A CURVE TO THE RIGHT HAVING A RADIUS OF 83.00 FEET, A CENTRAL ANGLE OF 63°52'21", AN ARC LENGTH OF 92.53 FEET, THE CHORD OF WHICH BEARS SOUTH 69°09'40" EAST, 87.81 FEET, TO A POINT OF REVERSE CURVATURE;
5. ALONG THE ARC OF A CURVE TO THE LEFT HAVING A RADIUS OF 30.00 FEET, A CENTRAL ANGLE OF 51°43'21", AN ARC LENGTH OF 27.08 FEET, THE CHORD OF WHICH BEARS SOUTH 63°05'10" EAST, 26.17 FEET;
6. SOUTH 88°56'51" EAST, A DISTANCE OF 243.83 FEET, TO A POINT OF CURVATURE;
7. ALONG THE ARC OF A CURVE TO THE LEFT HAVING A RADIUS OF 25.00 FEET, A CENTRAL ANGLE OF 90°00'00", AN ARC LENGTH OF 39.27 FEET, THE CHORD OF WHICH BEARS NORTH 46°03'09" EAST, 35.36 FEET TO A POINT OF NONTANGENCY;
8. SOUTH 09°24'27" EAST, A DISTANCE OF 66.10 FEET;
9. SOUTH 01°03'09" WEST, A DISTANCE OF 175.57 FEET;
10. SOUTH 56°41'17" WEST, A DISTANCE OF 215.90 FEET;
11. SOUTH 36°35'50" WEST, A DISTANCE OF 75.58 FEET;
12. SOUTH 19°07'03" WEST, A DISTANCE OF 137.44 FEET;
13. SOUTH 41°33'40" WEST, A DISTANCE OF 79.21 FEET;
14. SOUTH 60°12'44" WEST, A DISTANCE OF 170.91 FEET;
15. SOUTH 38°34'03" WEST, A DISTANCE OF 70.07 FEET;
16. SOUTH 15°44'21" WEST, A DISTANCE OF 139.99 FEET;
17. SOUTH 09°03'19" EAST, A DISTANCE OF 51.67 FEET;
18. SOUTH 42°36'24" EAST, A DISTANCE OF 446.86 FEET;
19. SOUTH 26°39'49" EAST, A DISTANCE OF 322.56 FEET;
20. SOUTH 08°56'07" EAST, A DISTANCE OF 50.00 FEET;
21. SOUTH 07°10'60" WEST, A DISTANCE OF 98.77 FEET;
22. SOUTH 31°53'16" EAST, A DISTANCE OF 138.71 FEET;
23. SOUTH 01°03'09" WEST, A DISTANCE OF 56.77 FEET;
24. SOUTH 00°59'17" WEST, A DISTANCE OF 2202.71 FEET;
25. SOUTH 89°42'02" WEST, A DISTANCE OF 359.78 FEET;
26. SOUTH 51°32'36" WEST, A DISTANCE OF 543.55 FEET;
27. SOUTH 89°42'29" WEST, A DISTANCE OF 1787.78 FEET;
28. SOUTH 89°49'37" WEST, A DISTANCE OF 1647.46 FEET;
29. NORTH 22°39'32" EAST, A DISTANCE OF 1231.55 FEET;
30. NORTH 57°53'03" EAST, A DISTANCE OF 1357.69 FEET;
31. NORTH 64°37'40" EAST, A DISTANCE OF 57.31 FEET;
32. SOUTH 00°56'44" WEST, A DISTANCE OF 24.33 FEET;
33. NORTH 79°47'08" EAST, A DISTANCE OF 47.71 FEET;
34. SOUTH 81°35'52" EAST, A DISTANCE OF 136.58 FEET;
35. NORTH 58°49'22" EAST, A DISTANCE OF 77.11 FEET;
36. NORTH 30°51'37" EAST, A DISTANCE OF 131.96 FEET;
37. NORTH 04°53'46" WEST, A DISTANCE OF 73.50 FEET;

38. NORTH 27°55'32" WEST, A DISTANCE OF 195.02 FEET;
39. NORTH 03°00'47" EAST, A DISTANCE OF 42.18 FEET;
40. NORTH 46°58'00" EAST, A DISTANCE OF 37.17 FEET;
41. NORTH 39°21'31" WEST, A DISTANCE OF 372.62 FEET;
42. NORTH 00°52'52" EAST, A DISTANCE OF 2644.60 FEET;
43. NORTH 88°46'59" EAST, A DISTANCE OF 567.39 FEET;
44. SOUTH 17°59'14" WEST, A DISTANCE OF 192.17 FEET, TO A POINT OF NONTANGENTIAL CURVATURE;
45. ALONG THE ARC OF A CURVE TO THE LEFT HAVING A RADIUS OF 6721.00 FEET, A CENTRAL ANGLE OF 06°11'43", AN ARC LENGTH OF 726.73 FEET, THE CHORD OF WHICH BEARS SOUTH 26°55'48" WEST, 726.38 FEET TO A POINT OF NONTANGENCY;
46. NORTH 89°32'30" EAST, A DISTANCE OF 610.45 FEET;
47. SOUTH 01°00'57" WEST, A DISTANCE OF 1019.29 FEET;
48. SOUTH 85°34'18" EAST, A DISTANCE OF 518.94 FEET;
49. NORTH 01°00'58" EAST, A DISTANCE OF 431.11 FEET;
50. SOUTH 89°16'08" EAST, A DISTANCE OF 44.21 FEET;
51. NORTH 11°59'32" EAST, A DISTANCE OF 320.16 FEET;
52. NORTH 26°06'42" EAST, A DISTANCE OF 358.66 FEET;
53. NORTH 26°39'43" EAST, A DISTANCE OF 242.96 FEET;
54. NORTH 50°25'08" EAST, A DISTANCE OF 84.05 FEET;
55. NORTH 70°51'22" EAST, A DISTANCE OF 60.26 FEET;
56. NORTH 52°57'56" EAST, A DISTANCE OF 83.63 FEET;
57. NORTH 36°35'09" EAST, A DISTANCE OF 137.73 FEET TO THE **POINT OF BEGINNING**.

SAID PARCEL CONTAINING A CALCULATED AREA OF 12,556,307 SQUARE FEET OR 288.253 ACRES, MORE OR LESS AND BEING SUBJECT TO ANY EXISTING EASEMENTS AND OR RIGHTS OF WAY OF WHATSOEVER NATURE. THE LINEAL UNIT USED IN THE PREPARATION OF THIS LEGAL DESCRIPTION IS THE U.S. SURVEY FOOT AS DEFINED BY THE UNITED STATES DEPARTMENT OF COMMERCE, NATIONAL INSTITUTE OF STANDARDS AND TECHNOLOGY.

I, PATRICK M. STEENBURG, A SURVEYOR LICENSED IN THE STATE OF COLORADO, DO HEREBY CERTIFY THAT THE ABOVE LEGAL DESCRIPTION AND ATTACHED EXHIBIT WERE PREPARED BY ME OR UNDER MY DIRECT SUPERVISION AND CHECKING.

PATRICK M. STEENBURG P.L.S. 38004
 FOR AND ON BEHALF OF
 WESTWOOD PROFESSIONAL SERVICES, INC.
 10333 E. DRY CREEK ROAD, SUITE 240
 ENGLEWOOD, CO 80112



NW 1/4
SEC. 6

NE 1/4
SEC. 6

N. LINE, SE 1/4 SEC. 6
N88°59'54"W 2632.03'
CEN 1/4 COR. SEC. 6
FND NO. 6 REBAR
& A 2" ALUM. CAP
ILLEGIBLE

POINT OF COMMENCEMENT
EAST 1/4 COR. SEC. 6
FND NO. 6 REBAR WITH
2-1/2" ALUM. CAP
ILLEGIBLE

W. LINE, SE 1/4 SEC. 6
S00°52'19"W 2596.67'

SW 1/4
SEC. 6

SE 1/4
SEC. 6
PARCEL OF LAND
5,608,342 S.F.
128.750 AC.

WELD COUNTY ROAD 3

E. LINE, SE 1/4 SEC. 6
(BASIS OF BEARINGS)
S00°59'17"W 2537.34'

WELD COUNTY ROAD 3

S. LINE, SW 1/4 SEC. 6
S89°49'37"W 2436.05'

S. LINE, SE 1/4 SEC. 6
S89°42'29"W 2627.43'

SE COR. SEC. 6
FND 2-1/2" DIAMETER
IRON PIPE WITH A
3-1/4" BRASS CAP
US CADASTRAL SURV. BLM

SW COR. SEC. 6
FND NO. 6 REBAR
& 2-1/2" ALUM. CAP
LS 23501

S 1/4 COR. SEC. 6
FND 2" DIAMETER PIPE
& 3-1/4" BRASS CAP
US CADASTRAL SURV. BLM

CURVE TABLE

CURVE NO.	RADIUS	DELTA	LENGTH	CHORD DIRECTION	CHORD LENGTH
C1	435.00'	14°17'24"	108.49'	S81°52'09"E	108.21'
C2	25.00'	89°59'52"	39.27'	N45°59'13"E	35.35'
C3	58.00'	42°50'36"	43.37'	N69°33'51"E	42.37'
C4	485.00'	7°35'27"	64.26'	N12°08'45"E	64.21'
C5	340.00'	8°26'00"	50.05'	N45°48'19"E	50.00'
C6	205.00'	9°32'21"	34.13'	N05°23'22"W	34.09'
C7	48.00'	71°54'37"	60.24'	N80°06'21"E	56.37'

LINE TABLE

LINE NO.	DIRECTION	LENGTH
L1	S82°50'32"E	67.25'
L2	S74°19'48"E	150.00'
L3	S71°12'59"E	67.39'
L4	S09°28'20"E	66.10'
L5	S00°59'17"W	65.00'

600 300 0 600 1200

SCALE: 1" = 600'

THE ABOVE DESCRIBED PARCEL CONTAINS 5,608,342 SQUARE FEET OR (128.750 ACRES) MORE OR LESS.
This illustration does not represent a monumented survey. It is intended only to depict the attached legal description.

SOUTH HALF OF SECTION 6
T1N, R68W, 6TH P.M.
WELD COUNTY, COLORADO

RESIDENTIAL DISTRICT NO. 1



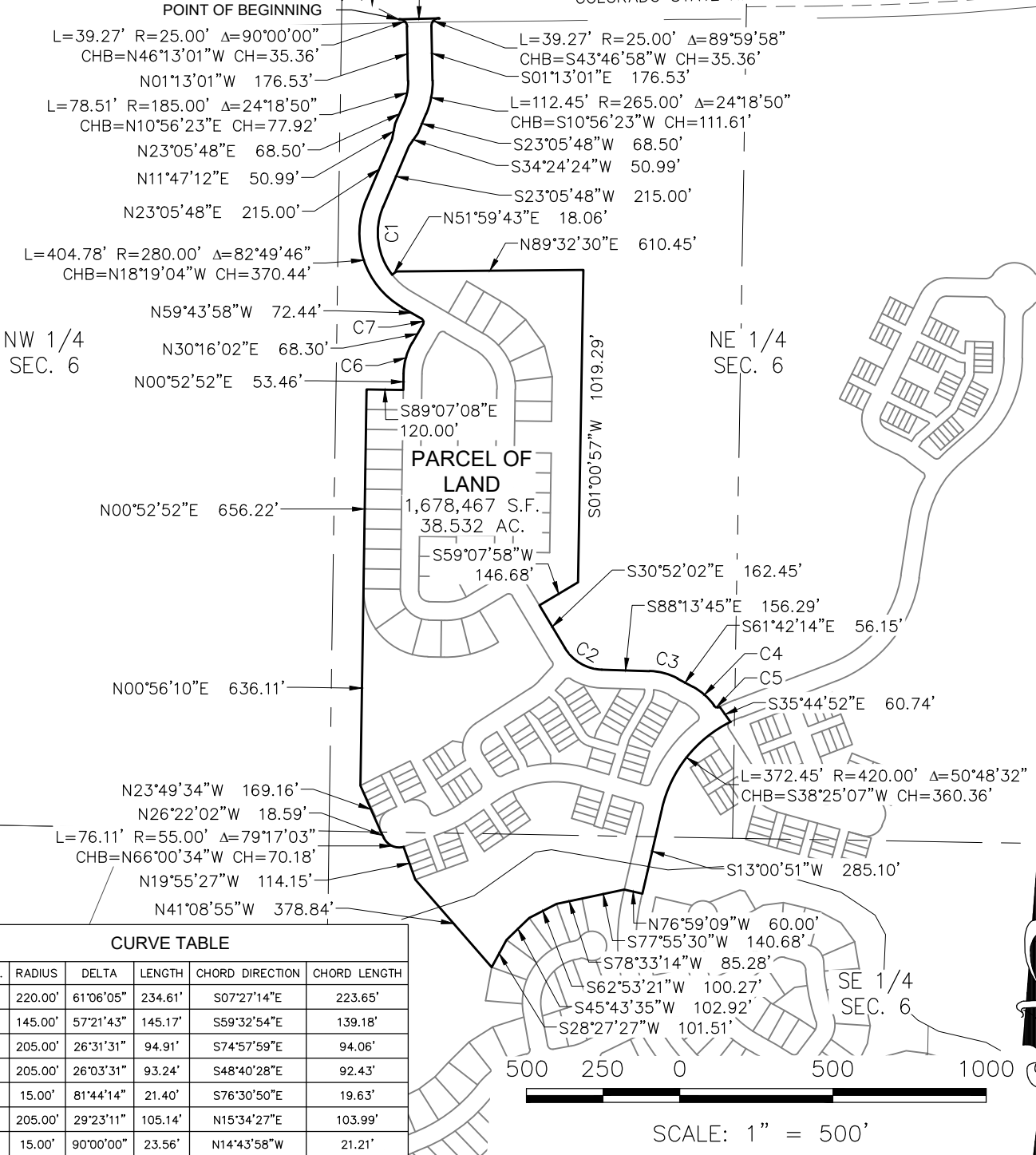
10333 E. Dry Creek Rd.
Suite 240
Englewood, CO 80112
Tel: 720.482.952
www.cvlinc.net
westwoodps.com

SHEET 1 OF 1
DATE: OCTOBER 6, 2020

N:\PROJECT\SPRING HILL\CAD\SURVEY\LEGAL\SMETRO\DISTRICTS\SPRING HILL RESIDENTIAL DISTRICT NO.1.DWG. MICHAEL P. 10/6/20

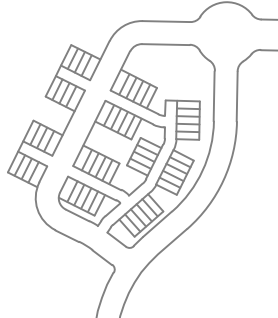
POINT OF COMMENCEMENT
 N 1/4 COR. SEC. 6
 FOUND NO. 6 REBAR WITH
 3-1/4" ALUMINUM CAP
 PLS 36053

NE COR. SEC. 6
 FND NO. 6 REBAR WITH
 2-1/2" ALUM. CAP
 PLS 25937



NW 1/4
 SEC. 6

NE 1/4
 SEC. 6



PARCEL OF
 LAND
 1,678,467 S.F.
 38.532 AC.

CURVE TABLE					
CURVE NO.	RADIUS	DELTA	LENGTH	CHORD DIRECTION	CHORD LENGTH
C1	220.00'	61°06'05"	234.61'	S07°27'14"E	223.65'
C2	145.00'	57°21'43"	145.17'	S59°32'54"E	139.18'
C3	205.00'	26°31'31"	94.91'	S74°57'59"E	94.06'
C4	205.00'	26°03'31"	93.24'	S48°40'28"E	92.43'
C5	15.00'	81°44'14"	21.40'	S76°30'50"E	19.63'
C6	205.00'	29°23'11"	105.14'	N15°34'27"E	103.99'
C7	15.00'	90°00'00"	23.56'	N14°43'58"W	21.21'

THE ABOVE DESCRIBED PARCEL CONTAINS 1,678,467 SQUARE FEET OR (38.532 ACRES) MORE OR LESS.
 This illustration does not represent a monumented survey. It is intended only to depict the attached legal description.

EAST HALF OF SECTION 6
T1N, R68W, 6TH P.M.
WELD COUNTY, COLORADO
RESIDENTIAL DISTRICT NO. 2

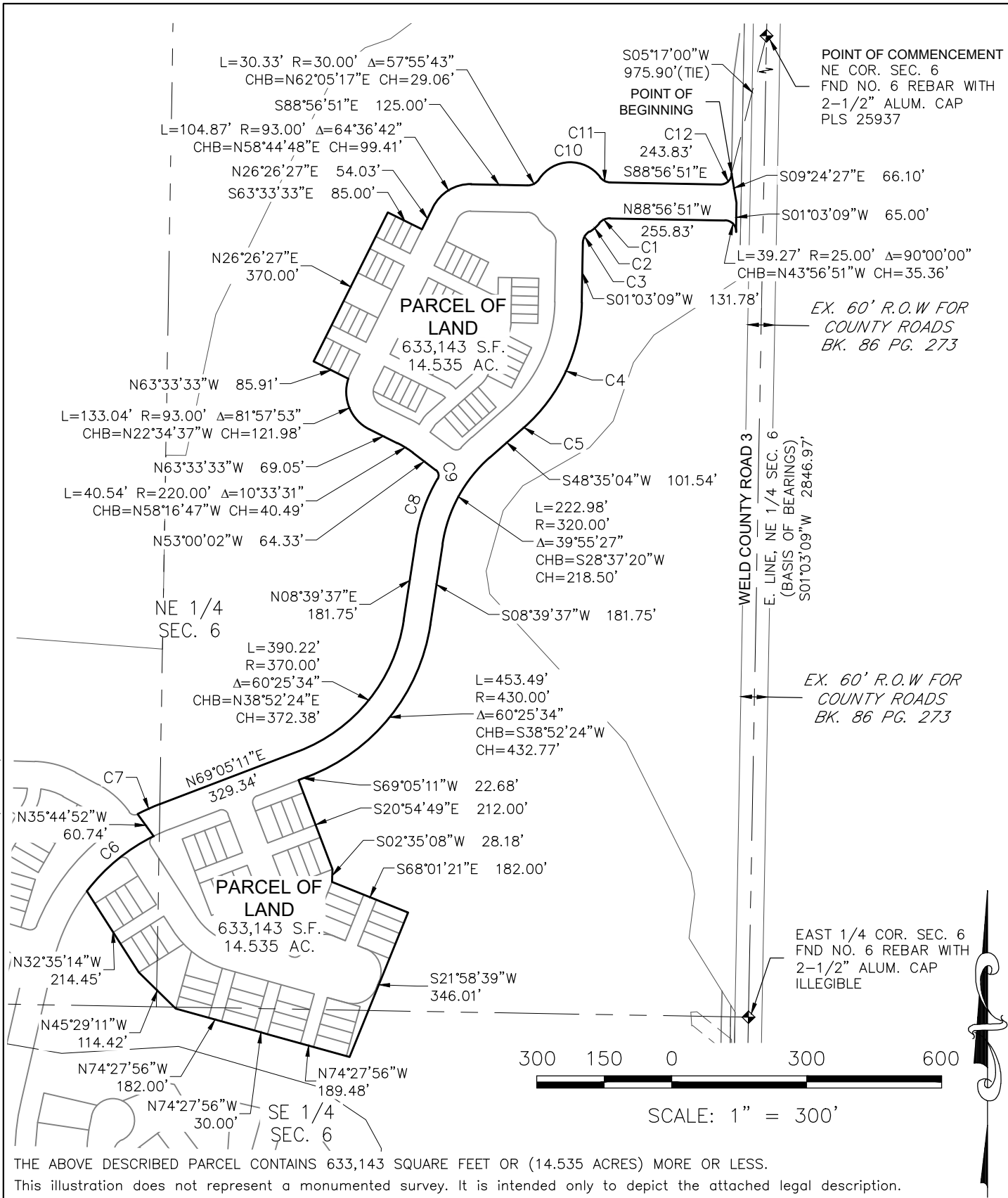


10333 E. Dry Creek Rd.
Suite 240
Englewood, CO 80112
Tel: 720.482.952
www.cvlinc.net
westwoodps.com
 SHEET 1 OF 2
 DATE: OCTOBER 6, 2020

a Westwood team

N:\PROJECT\SSPRING HILL\CAD\SURVEY\LEGAL\SMETRO DISTRICTS\SPRING HILL RESIDENTIAL DISTRICT NO.2.DWG. MICHAEL P. 10/6/20

N:\PROJECT\SPRING HILL\CAD\SURVEY\LEGAL\SMETRO DISTRICTS\SPRING HILL RESIDENTIAL DISTRICT NO.3.DWG. MICHAEL P. 10/6/20



THE ABOVE DESCRIBED PARCEL CONTAINS 633,143 SQUARE FEET OR (14.535 ACRES) MORE OR LESS.
This illustration does not represent a monumented survey. It is intended only to depict the attached legal description.

EAST HALF OF SECTION 6
T1N, R68W, 6TH P.M.
WELD COUNTY, COLORADO

RESIDENTIAL DISTRICT NO. 3



10333 E. Dry Creek Rd.
Suite 240
Englewood, CO 80112
Tel: 720.482.952
www.cvlinc.net
westwoodps.com
SHEET 1 OF 2
DATE: OCTOBER 6, 2020

CURVE TABLE					
CURVE NO.	RADIUS	DELTA	LENGTH	CHORD DIRECTION	CHORD LENGTH
C1	30.00'	51°43'21"	27.08'	S65°11'28"W	26.17'
C2	83.00'	19°39'05"	28.47'	S49°09'20"W	28.33'
C3	30.00'	57°55'43"	30.33'	S30°01'01"W	29.06'
C4	380.00'	47°31'55"	315.24'	S24°49'06"W	306.28'
C5	380.00'	47°31'55"	315.24'	S24°49'06"W	306.28'
C6	420.00'	26°25'47"	193.74'	N50°36'30"E	192.03'
C7	480.00'	6°28'08"	54.19'	N65°51'07"E	54.16'
C8	380.00'	21°47'52"	144.57'	N19°33'33"E	143.70'
C9	15.00'	83°27'30"	21.85'	N11°16'16"W	19.97'
C10	83.00'	109°39'05"	158.84'	N87°56'58"E	135.69'
C11	30.00'	51°43'21"	27.08'	S63°05'10"E	26.17'
C12	25.00'	90°00'00"	39.27'	N46°03'09"E	35.36'

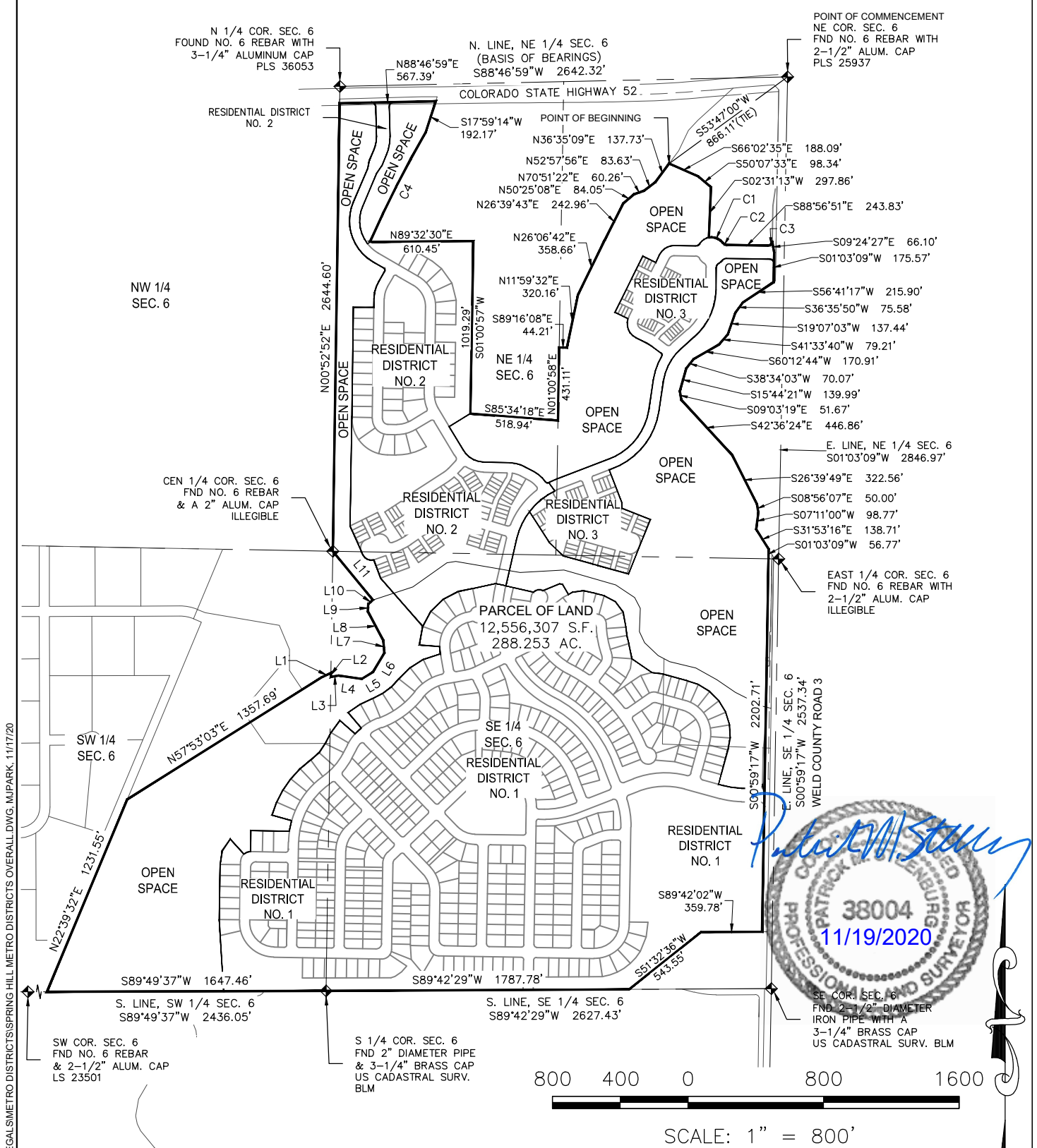
EAST HALF OF SECTION 6
T1N, R68W, 6TH P.M.
WELD COUNTY, COLORADO

RESIDENTIAL DISTRICT NO. 3



10333 E. Dry Creek Rd.
Suite 240
Englewood, CO 80112
Tel: 720.482.952
www.cvlinc.net
westwoodps.com

SHEET 2 OF 2
DATE: OCTOBER 6, 2020



Patrick M. Steiner

PROFESSIONAL LAND SURVEYOR
 38004
 11/19/2020

THE ABOVE DESCRIBED PARCEL CONTAINS 12,556,307 SQUARE FEET OR (288.253 ACRES) MORE OR LESS.
 This illustration does not represent a monumented survey. It is intended only to depict the attached legal description.

**PORTIONS OF SECTION 6
 T1N, R68W, 6TH P.M.
 WELD COUNTY, COLORADO**

RESIDENTIAL DISTRICTS & OPEN SPACE

CML
 a Westwood team

10333 E. Dry Creek Rd.
 Suite 240
 Englewood, CO 80112
 Tel: 720.482.952
 www.cvlinc.net
 westwoodps.com

SHEET 1 OF 2
 DATE: NOVEMBER 17, 2020

N:\PROJECT\SPRING HILL\CAD\SURVEY\LEGAL\SMETRO DISTRICTS\SPRING HILL METRO DISTRICTS OVERALL DWG.MJPARK.11/17/20

N:\PROJECT\SPRING HILL\CAD\SURVEY\LEGAL\SPRING HILL METRO DISTRICTS\OVERALL.DWG, MJPARK, 11/17/20

CURVE TABLE					
CURVE NO.	RADIUS	DELTA	LENGTH	CHORD DIRECTION	CHORD LENGTH
C1	83.00'	63°52'21"	92.53'	S69°09'40"E	87.81'
C2	30.00'	51°43'21"	27.08'	S63°05'10"E	26.17'
C3	25.00'	90°00'00"	39.27'	N46°03'09"E	35.36'
C4	6721.00'	6°11'43"	726.73'	S26°55'48"W	726.38'

LINE TABLE		
LINE NO.	DIRECTION	LENGTH
L1	N64°37'40"E	57.31'
L2	S00°56'44"W	24.33'
L3	N79°47'08"E	47.71'
L4	S81°35'52"E	136.58'
L5	N58°49'22"E	77.11'
L6	N30°51'37"E	131.96'
L7	N04°53'46"W	73.50'
L8	N27°55'32"W	195.02'
L9	N03°00'47"E	42.18'
L10	N46°58'00"E	37.17'
L11	N39°21'31"W	372.62'



PORTIONS OF SECTION 6
T1N, R68W, 6TH P.M.
WELD COUNTY, COLORADO

RESIDENTIAL DISTRICTS & OPEN SPACE



10333 E. Dry Creek Rd.
Suite 240
Englewood, CO 80112
Tel: 720.482.952
www.cvlinc.net
westwoodps.com

SHEET 2 OF 2
DATE: NOVEMBER 17, 2020